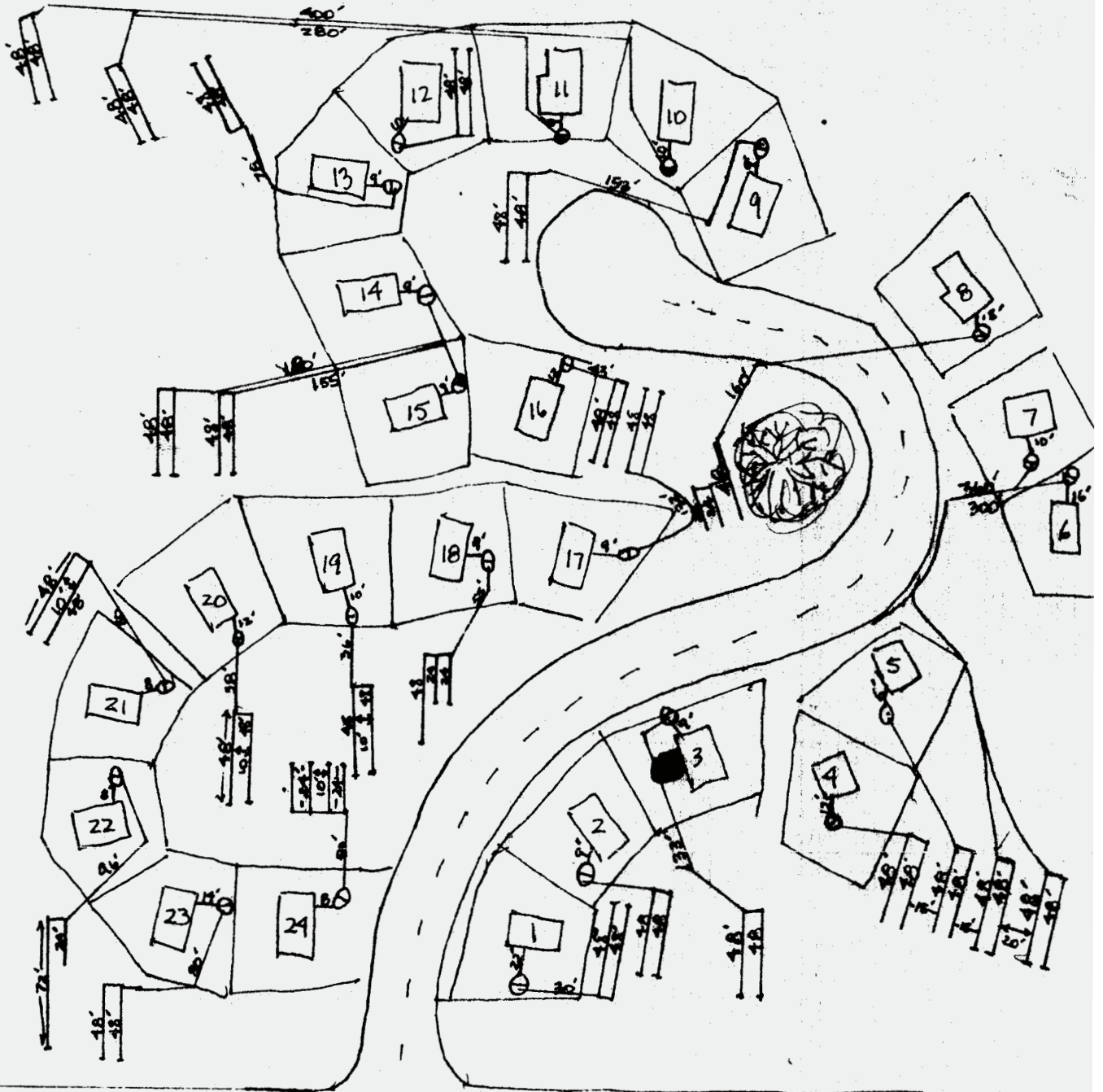




OPAL Bonnie Brae Septic System As-Built



EXHAUSTED FOREST ROAD

ALL SEPTIC TANKS ARE 1000 GALLON
SITES 4 & 5 ARE GRAVITY FED
ALL OTHER SITES ARE PRESSURIZED W/ #20 OSI OS HH PUMP / AMLAHW ALARM
ALL PUMP LINES ARE 1/4" PVC SCH 40
ALL LATERALS & MANIFOLDS ARE 1/4" PVC SCH 40