

**IMPORTANT**  
to be kept by the user

# CONVECTAIR

## ALTO, MEZZO, SOLO

### INSTALLATION & OPERATING INSTRUCTIONS FOR MODELS 7375 C, 7376 C, 7377 C

#### PLANNING THE INSTALLATION:

Convectair units should be installed by a qualified electrician according to national and local codes. All wiring must comply with local codes and ordinances.

NOTE: If you plan to control the units with CONVECTAIR's central "Programmer", the installation must be done using three-conductor wiring (3-12).

- 1- Choose the location where the CONVECTAIR will be installed.
- 2- Check that nothing such as drapes or furniture interferes with the airflow to and from the CONVECTAIR.

#### INSTALLATION:

To avoid unnecessary length of cable behind unit, be sure that the supply cable comes out from the wall at the correct height (Figure 1). Should the unit be installed on an outside wall, it is suggested to take out the supply wire in the middle of the unit since it is hard to reinsert excess wiring in an outside wall.

NOTE: Side wiring covers are available if the supply wire is too visible.

- 1- Free mounting bracket by pressing and pulling both locking brackets (Figure 2).
- 2- Draw a horizontal line on the wall at 6 1/2" (16.5 cm) from the floor.
- 3- Fasten mounting bracket **above** the line using 4 screws in the slots closest to the uprights. It is also possible to locate the unit according to a wall or furniture, using the values in Figure 1.

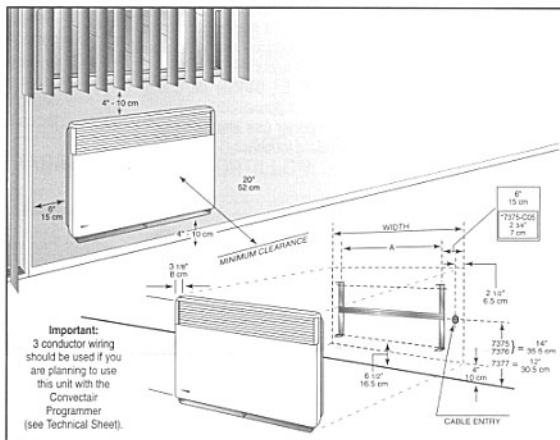


Figure 1

#### 7375 ALTO

#### 7376 MEZZO

#### 7377 SOLO

WATTS	Width				Width				Width			
	cm	in.	A	cm	cm	in.	A	cm	cm	in.	A	cm
500	26	10 1/4	4 1/2	11.5	34	13 3/8	2 3/8	6	50	19 5/8	8 5/8	14
750	34	13 3/8	2 3/8	6	42	16 1/2	5 1/2	14	58	22 7/8	11 3/4	30
1000	42	16 1/2	5 5/8	14.5	50	19 5/8	8 3/4	22	66	26	15	38
1250	50	19 5/8	8 3/4	22	58	22 7/8	11 3/4	30	82	32 1/4	21 1/4	54
1500	58	22 7/8	11 3/4	30	66	26	15	38	90	35 1/2	24 3/8	62
1750	66	26	15	38	74	29 1/8	18 1/8	46	106	41 3/4	30 3/4	78
2000	66	26	15	38	82	32 1/4	21 1/4	54	106	41 3/4	30 3/4	78

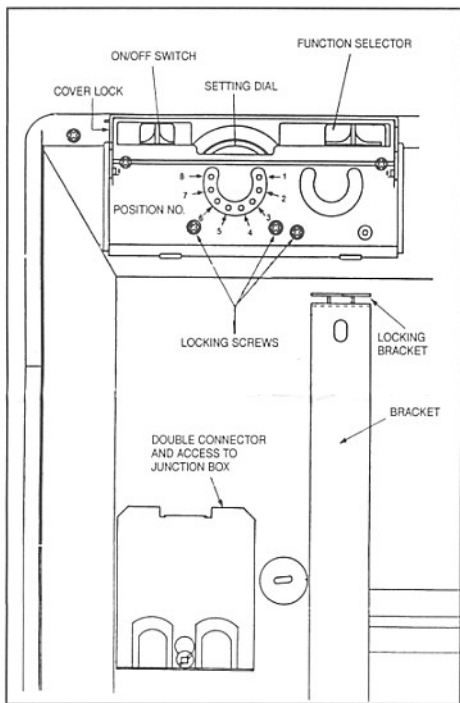


Figure 2

## WARNING:

**CAUTION:** This unit must be connected to a 240 volts or 208 volts circuit, 60 cycles. Disconnect power supply before making wiring connections to prevent electrical shock or equipment damage.

Access to the junction box is reached by an access trap situated at the rear of the CONVECTAIR (Figure 2).

- 1- Unscrew and remove double connector.
- 2- Connect the ground wire to the green grounding screw inside the connection box.
- 3- Connect the lead wires to the CONVECTAIR using the connectors provided.
- 4- You will find, in the connection box, a third wire with a sealed end. This wire must not be used for the electrical connection. This wire will be used only if the unit is connected to a CONVECTAIR central control system.

- 5- Carefully put back all wires inside the connection box, slide the cover back in place and tighten.
- 6- Hook the CONVECTAIR unit onto the mounting bracket tabs with the unit slightly angled towards you.
- 7- Push the CONVECTAIR towards the wall until it is engaged on both locking brackets.

## OPERATING CONTROLS:

The ON/OFF switch is installed on the control panel of the CONVECTAIR. The unit will operate when switch is in the ON position. The green indicator light, next to the switch, will allow you to monitor the operation of your CONVECTAIR unit.

## SETTING THE THERMOSTAT:

The thermostat setting dial, situated on the control box, is accessible when the protective cover is opened. To set thermostat, adjust setting dial to desired comfort level (between 6 and 9).

After approximately an hour of use, if adjustment is not satisfactory, slightly turn the dial either left or right to raise or lower temperature to the desired comfort level.

## LOCKING THE SETTING DIAL AND THE COVER:

First, detach the unit from the wall brackets. Behind the unit control dial, three screws are provided to lock the protection cover and the setting dial. To simplify this operation, you may number the screw positions as shown on figure 2.

- 1- To block the thermostat within a temperature range:
  - Maximum setting — turn the setting dial to frost-free (8) and insert a screw in the position corresponding to the previous number of the selected number for maximum; ex. to lock the maximum at 9, insert the screw at no. 8 (Figure 2).
  - Lower setting — turn the temperature dial to the new maximum position and insert a screw in the position corresponding to two numbers preceding the desired minimum; ex. to lock the minimum at 5, insert screw in no. 3 (Figure 2).
- 2- Permanent setting: turn the temperature dial to the desired position and insert a screw in the number corresponding to the figure preceding the selection on the dial and insert a second screw in the position preceding the first screw; ex. to lock at 7, insert a screw in position no. 6 and another screw in position no. 5.
- 3- To lock the cover, insert a screw in the upper corner of the cover in the provided space (Figure 2).

## FUNCTION SELECTOR:

The control box function selector offers 4 different positions:



### Programmed function:

To be used only when unit is connected to a CONVECTAIR central program unit (optional).



### Comfort function:

Select temperature by setting thermostat.



### Economy function:

Lowers the temperature by about 4°C (7°F) from comfort zone without moving the thermostat.

Can be used to reduce consumption at night, in unoccupied rooms, during temporary absences, etc.



### Frost protection:

Maintains about 8°C (45°F) temperature during absences of more than 48 hours.

(Not recommended in extreme cold).

## OPERATION:

When the CONVECTAIR is on, it will cycle every 25-30 seconds, The indicating light tells you when heat is on. The CONVECTAIR will always remain warm and ambient temperature will remain constant. It is normal that in very cold temperatures the unit could become hot. Caution is advised when young children are present.

## MAINTENANCE:

To keep your CONVECTAIR unit clean, a regular maintenance is suggested. To remove dust, use a soft cloth. To remove a stain, use a damp cloth. Never use abrasive products which could damage surface. For a better performance and a maximum efficiency, it is suggested that dust and lint be regularly removed from protective grille situated at the base of your CONVECTAIR.

### Warning:

In certain cases, it is possible that, after a certain time, a yellowing of the grille occurs. This is not due to a manufacturing defect. This is caused by surrounding air, which contains smoke and dust, being heated and released through grille. This is especially visible on pure white units and may provoke an important coloration.

### PREVENTION:

It is suggested that grilles be frequently cleaned especially with units installed in locations where cigarette smoke is present or in the kitchen. **Never use convectors while construction work or other activities that generate a lot of dust.**

### NOTE:

The first time your CONVECTAIR heats, a light smoke could be released. This is normal and should disappear after about 2 to 3 minutes.

## IF YOUR CONVECTAIR DOES NOT HEAT:

Before calling your electrician, please follow this procedure:

- 1- Make sure the breaker in the distribution panel is in the "ON" position.
- 2- Check that the ON/OFF switch is ON. Turn the setting dial to the MAXI position and set the function selector to "COMFORT".
- 3- If the light is still off, and that no heat is generated, call your electrician or the nearest CONVECTAIR repair center.

## WARRANTY

- 2 years against all defects
- 5 years on heating element

All **Convector** units are subject to a double warranty: 2 years on all parts and manufacturing defects and 5 years on the heating element itself. Warranty is applicable from date of purchase by the customer and under certain specific conditions. All details furnished with each unit.

### FOR FURTHER INFORMATION...

Do not hesitate to contact us.

### REPAIR CENTRES:

To find your nearest repair centre please call **CONVECTAIR**.

Montreal Area:  
Canada, U.S.A.:

(514) 433-5701  
1-800-463-6478

# CONVECTAIR

30 Place Sicard, Sainte-Thérèse, Quebec, Canada J7E 3X6

Tel.: (514) 433-5701 Fax: (514) 434-3166