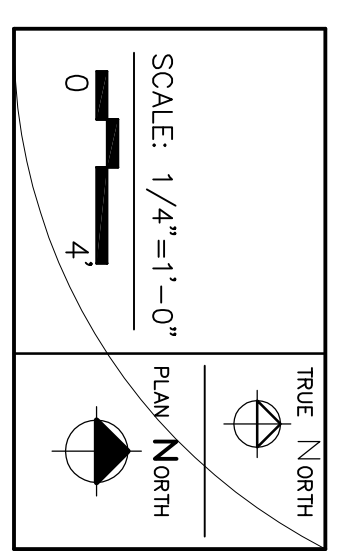


AMT.	SIZE	TYPE
6	3/0x5/0	DOUBLE HUNG
3	2/6x3/0	DOUBLE HUNG
3	3/0x2/0	AWNING
1	4/0x1/6	PICTURE

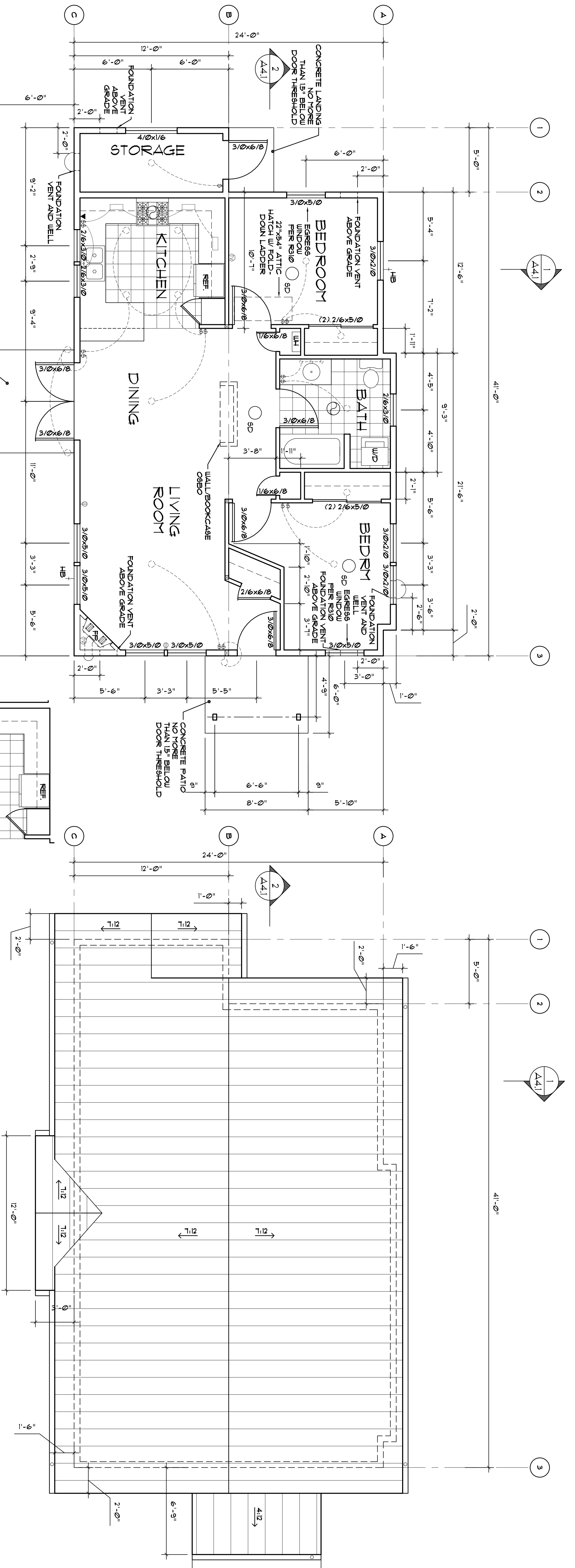


**WILD ROSE
 MEADOW
 2 BEDROOM E-W**
 OPAL COMMUNITY
 LAND TRUST

FLOOR PLAN
 ROOF PLAN

JOB NO.	08
DRAWN	CB
CHECKED	
REV.	
DATE	08/03/09

Title: **A2.1**
 0-2007



1 FLOOR PLAN

1a ALT. KITCHEN PLAN

2 ROOF PLAN

VENTILATION

WHOLE HOUSE FAN REQUIRED • 55-83 CFM

303.4.11 Whole House Ventilation Fans: Exhaust fans providing whole house ventilation shall have a flow rating at 0.25 inches water gauge as determined according to HVJ 916 (April 1995) or AFCA 210. 303.4.12 Fan Units: Whole house fans located 4 feet or less from the interior of a sleeping room shall be installed at least 4 feet from the interior of a sleeping room. Fans shall be installed at least 4 feet from the structural elements of the building and from attached isolated from the structural elements of the building and from attached duct work using insulated flexible duct or other approved material. 303.4.13 Fan Controls: The whole house ventilation fan shall be controlled by a 24-hour timer with the capability of being operated manually and automatically. The 24-hour timer shall be capable of being accessible. The 24-hour timer shall be capable of operating the whole house ventilation fan without energizing other energy-consuming appliances. At the time of final inspection, the automatic control timer shall be set to operate the whole house fan for at least 8 hours a day. A label shall be affixed to the control that reads "Whole House Ventilation (see operating instructions)".

R310 - EVERY BEDROOM

**SECTION R310
 EGRESS AND RESCUE OPENINGS**

Basements and every sleeping room shall have at least one operable emergency and rescue opening. Such opening shall open directly into a public street, public alley, yard or court. Where basements contain one or more sleeping rooms, emergency egress and rescue openings shall be required in each sleeping room. Emergency egress and rescue openings shall be provided in each sleeping room where emergency egress and rescue openings are provided they shall have a sill height of not more than 44 inches (1130 mm) above the floor. Where a door opening having a threshold below the adjacent ground elevation serves as an emergency egress and rescue opening and is provided with a built-in ramp, the clear opening height shall be not less than 68 inches (1727 mm). The net clear opening dimensions required by this section shall be obtained by the normal operation of the emergency egress and rescue openings with a finished sill height. Egress and rescue openings shall be provided with a window or door opening that opens directly into a public way or to a yard or court that opens to a public way. Exception: Basements used only to house mechanical equipment and not exceeding total floor area of 700 square feet (65 m²). Exception: Basements used only to house mechanical equipment and not exceeding total floor area of 700 square feet (65 m²). Exception: Grade floor openings shall have a minimum net clear opening of 5 square feet (0.465 m²). Exception: Minimum opening height. The minimum net clear opening shall be 20 inches (508 mm). Exception: Minimum opening height. The minimum net clear opening shall be 20 inches (508 mm). R310.14 Operational constraints. Emergency egress and rescue openings shall be operational from the inside of the room without the use of keys, tools or special knowledge.

SMOKE DETECTORS

3 MINIMUM REQUIRED. LOCATIONS SHOWN ARE APPROXIMATE

**SECTION R313
 SMOKE ALARMS**

R313.1 Smoke detection and notification. All smoke alarms shall be listed in accordance with UL 211 and installed in accordance with the provisions of this code and the household fire alarm equipment provisions of this code. R313.2 Location. Smoke alarms shall be installed in the following locations:
 1. In each sleeping room.
 2. Outside each separate sleeping area in the immediate vicinity of the bedrooms.
 3. On each additional story of the dwelling, including basements and attics in dwellings or dwelling units with split levels and without an intervening door or level between the adjacent levels, a smoke alarm installed on the upper level shall suffice for the adjacent lower level provided that the lower level has a door that opens directly into the upper level. The smoke alarm shall be installed on the upper level. R313.3 Power source. In new construction, the required smoke alarms shall receive their primary power from the building wiring when such wiring is served from a commercial power source and their secondary power shall be received from a battery. Smoke alarms shall be permitted to be battery operated when installed in buildings without commercial power or when installed in buildings that undergo alterations, repairs or additions regulated by section R313.11.

FIREPLACES

407.3 Fireplaces. Fireplaces shall be provided with each of the 407.2.5.1a) Solid Fuel Burning Appliances. Solid fuel burning appliances shall be provided with the following:
 a. Tightly fitting flue dampers, operated by a readily accessible manual or approved automatic control.
 b. Fireplaces with gas logs shall be installed in accordance with the manufacturer's instructions. The gas logs shall meet the standards of National Fire Protection Association (NFPA) 54 (Liquefied Petroleum Gas Code) and NFPA 54 (National Fuel Gas Code).
 c. An outside source for combustion air ducted into the firebox. The duct shall be at least 6 square inches, and shall be provided with an exterior air intake. The exterior air intake shall be installed with the combustion air systems necessary for their safe and efficient combustion and specified by the manufacturer in accordance with the Washington State Building Standard 31-2 (UAC 51-50-31200) and IBC Section 2114 (UAC 51-50-2114).