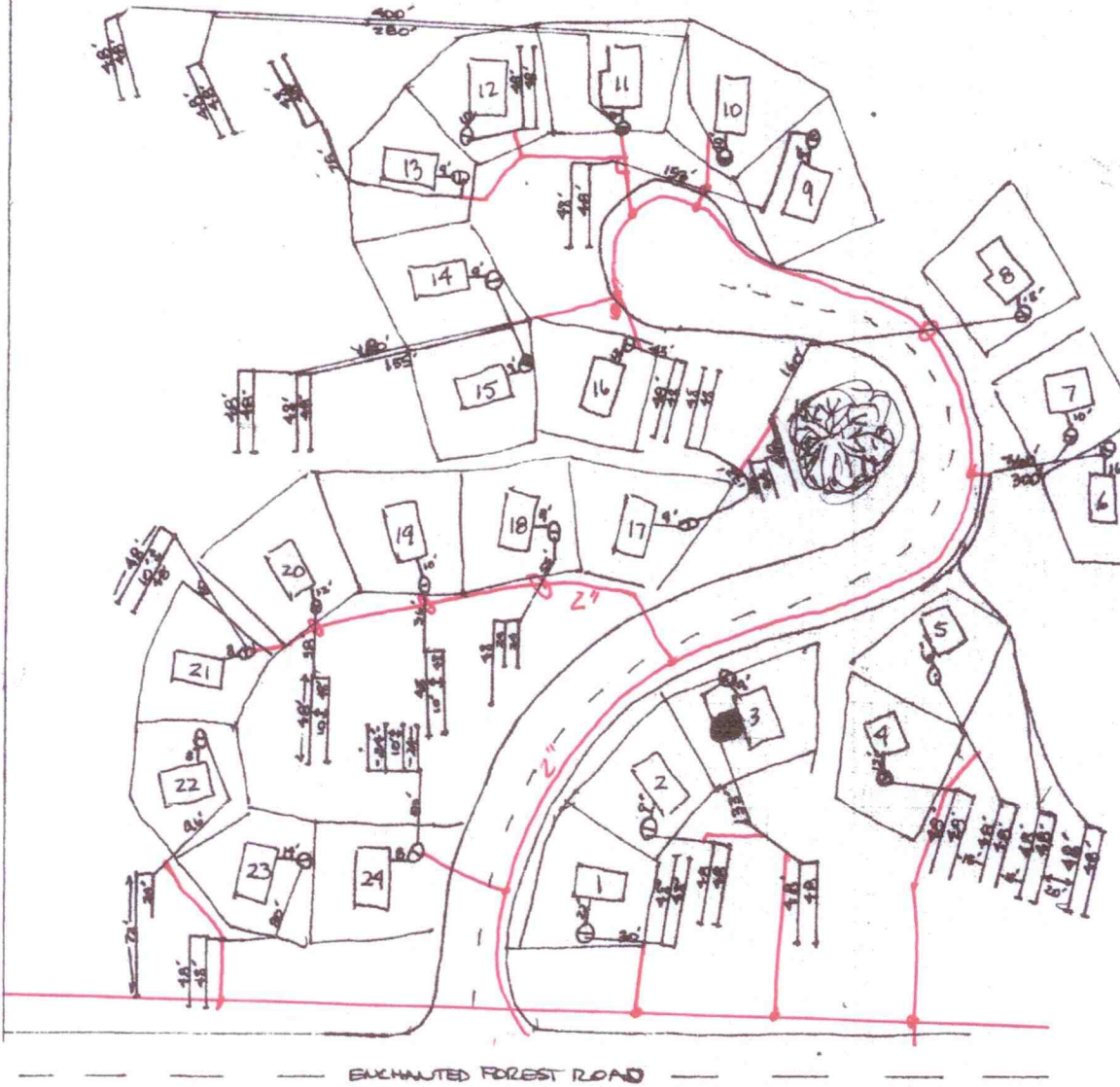


N

OPAL Bonnie Brae Septic System As-Built



- ALL SEPTIC TANKS ARE 1000 GALLON
- SITES 4 & 5 ARE GRAVITY FED
- ALL OTHER SITES ARE PRESSURIZED W/ #20 OSI DS HH PUMP / AMLARW ALARM
- ALL PUMP LINES ARE 1 1/4" PVC SCH 40
- ALL LATERALS & MANIFOLDS ARE 1 1/4" PVC SCH 40